

MS Access Delete Query For MS Access versions 2000, 2002, 2003

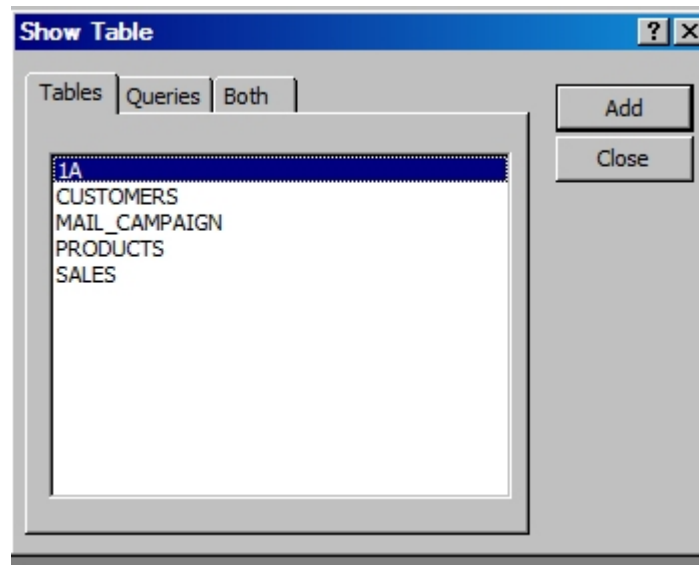
Go here To [Delete Records in VBA](#).

The Access query builder is a powerful tool. With it you build a query visually and run it. Pretty much all versions from Access 97 to 2007 the query builder looks the same. In Access 2007 there are some differences. For the most part this article will be dealing with MS Access 2000-2003. We will now build a **Delete Query**.

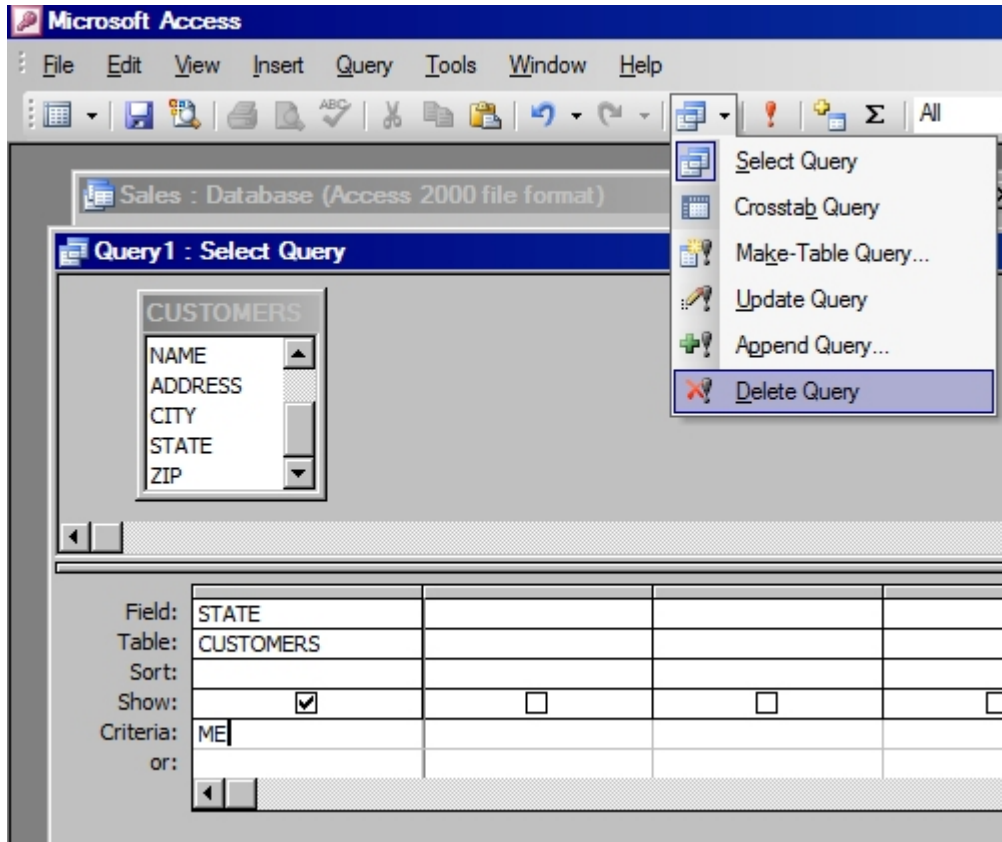
To design the **Access Delete Query** using the query builder simply click "Objects" in your left hand menu and then "Queries".

You will be given a choice between "Create query in Design view" and "Create query by using wizard".

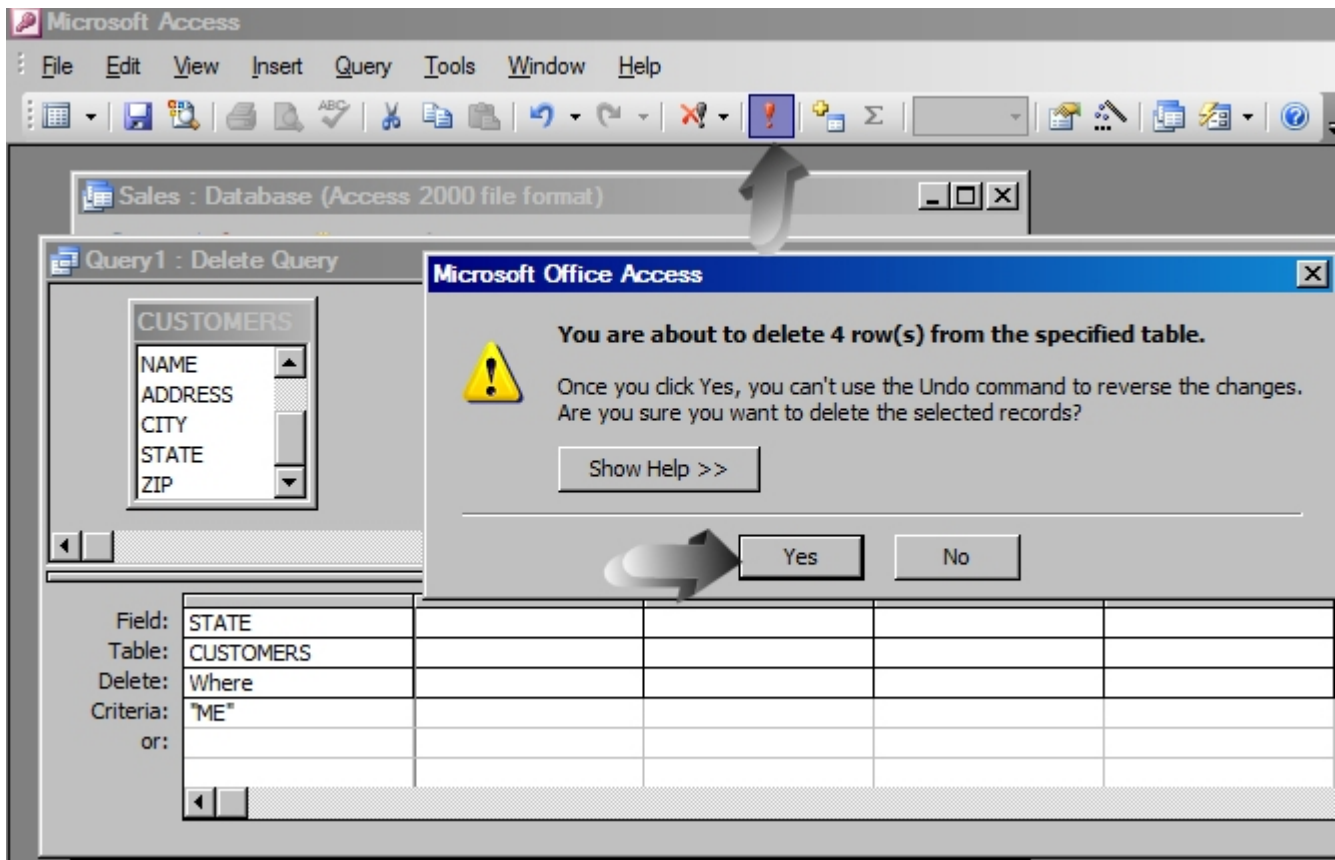
This article will only deal with "Create query in Design view". Now double click "Create query in Design view". You will immediately be presented with a window called "Show Table". Click Customers and then click Close.



You will then be presented with a Query in design view. Double click State Field and then type in a State that is in your Customers Table, I typed in ME for mine. Next click the Query Type button and select Delete Query from the Menu.



Click the red Exclamation point to run the Delete Query. All my records with ME will be deleted.



Your delete query is now complete

For further MS Access tutorials go here: [MS Access tutorials](#)